

## NED™ AR/VR Testing Solutions





Measure what the eye really sees. Gamma Scientific offers the world's first high resolution, wide field of view (FOV) spectroradiometric and image quality analysis solutions to characterize the Virtual Image and Qualified Viewing Space of Augmented Reality, Virtual Reality, Mixed Reality and Head Up Displays (AR, VR, MR, HUD). The NED (Patent No. 10,257,509, 10,972,721, and 3497423) uniquely emulates true human eye motion to provide quick, correlated and comprehensive measurements thereby conforming to standards being developed by the ICDM committee of SID and the IEC.

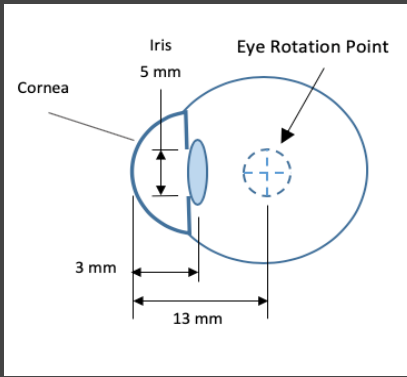
## NED™ E-Series High Resolution Robotic Systems Robotic Eye for AR,VR,MR and HUDs

### Key Features

- Integrated camera offers 16H x 12V degree instantaneous FOV with 250 pixels/degree high resolution
- Robotic positioning for true eye motion representation and design eye point measurement
- Lightweight and compact telescope assures precision spatial positioning with robotic arms
- Patented SLR viewing system with integrated LED measurement spot projector with built-in autocollimator
- 1 or 2 degree field stop aperture selection for eye foveal region correlation measurement spot
- Exceptional color and spectral purity for high sensitivity, high dynamic range spectroradiometric measurements
- Large and small range goniometric options available, covering  $\pm 44$  degrees vertical and  $\pm 22$  degree vertical FOV of the device respectively

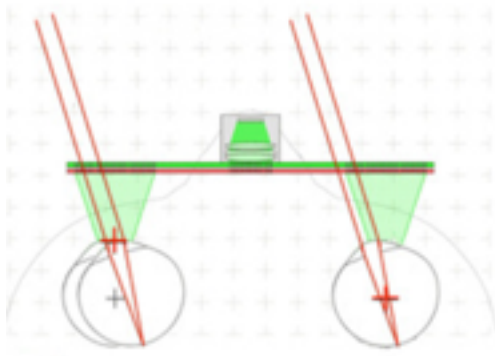
### Key Applications

- |   |  |
|---|--|
| ✓ | Augmented Reality (AR)   |
| ✓ | Virtual Reality (VR)   |
| ✓ | Mixed Reality (MR)   |
| ✓ | Automotive HUDs  |
| ✓ | Avionic Displays   |
| ✓ | Prescription AR Glasses   |
| ✓ | Waveguide-based Displays  |
| ✓ | Near-Eye Display Projectors  |
| ✓ | Retinal Writing Displays   |
| ✓ | 3D Aerial Displays   |
| ✓ | 3D Volumetric Displays   |
| ✓ | Medical & Healthcare AR/VR   |



## Small Entrance Pupil Requirement

Most display spectroradiometers have entrance pupils ranging from 20 to 40 mm. Proper characterization of near-eye displays requires an entrance pupil 5 mm or smaller diameter, matching that of the human iris. While this reduced entrance pupil greatly improves measurement accuracy, the light measurement system must have sufficient sensitivity and dynamic range to provide adequate signal to noise for both the small and large viewing areas associated with such displays.



## True Eye Motion Representation

Luminance, color and uniformity versus angle of view are essential performance metrics in AR/VR/MR device characterization. Although some measurement systems attempt to replicate eye motion by rotating about the pupil's location, this can generate misrepresentative information in terms of the user experience. True representative information can only be attained by matching the rotation axis of the measurement system with that of the human eye.

Recent work has been done that defines a minimum essential set of measurement instrument characteristics to assure repeatable and reproducible photometric and colorimetric measurement results. These collective criteria are being used by the ISO, IEC TC110 and the ICDM committee of the Society for Information Display to establish regulations for the specification and safety of such systems.

Systems employing fixed pupil rotation deliver flawed information in terms of user experience.

Systems which match the Eye Rotation Point replicate real-world conditions.

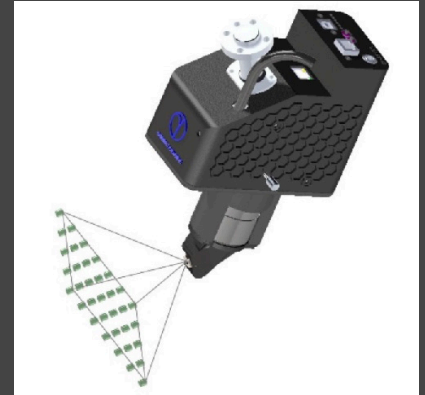
## Key Application Areas

We provide test and characterization solutions to ensure reliable, repeatable, and reproducible photometric and colorimetric measurement results for AR/VR/MR displays, head-up displays, helmet-mounted displays, avionic displays, medical and healthcare AR/MR devices and near-eye industrial, educational and training displays.



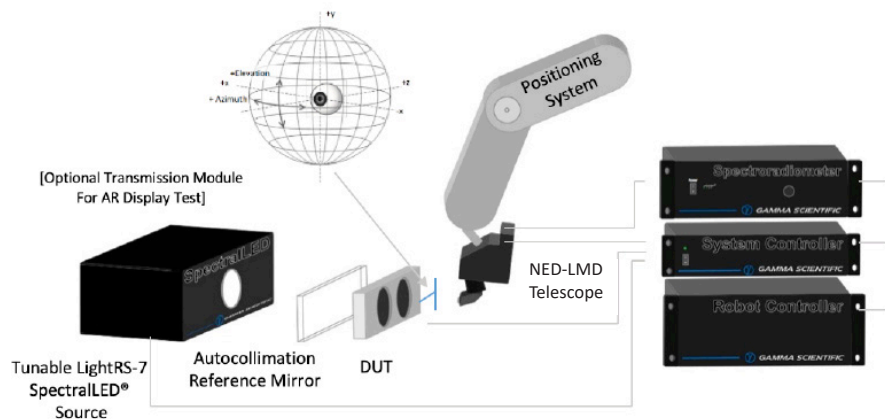
## State-of-the-Art Camera System

The Radiometric Optical Multichannel Analyzer (RadOMA) camera/telescope integral optical head maps display uniformity at vantage point field of view, including luminance, CCT, CIE x,y, peak and dominant wavelength. An integrated programmable pattern generator displays any 2D/3D test pattern and outputs in standard VDU formats such as Display Port and HDMI. With automatic scaling to any display resolution, the system supports from synchronous updates for motion artifact analysis.



## NED E-Series High Resolution Goniometric System

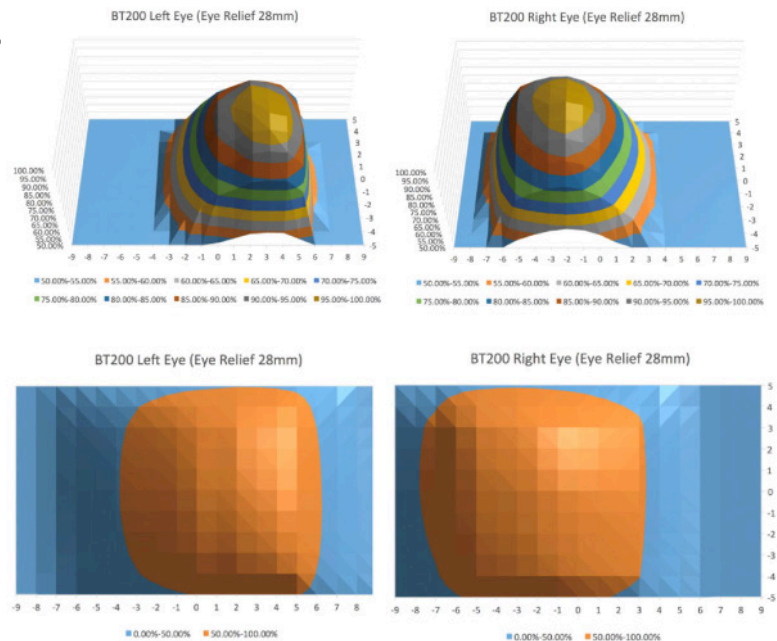
The patented NED instrument consists of a System Controller, a high-accuracy Spectroradiometer with exceptional low-light measurement capability, a high resolution SpectralLED<sup>®</sup> tunable light source system and a high-resolution state-of-the-art RadOMA telescope with Motorized/Auto Focus functionality over  $\pm 10$  Diopter range mounted to a precision 6-axis industrial robot.

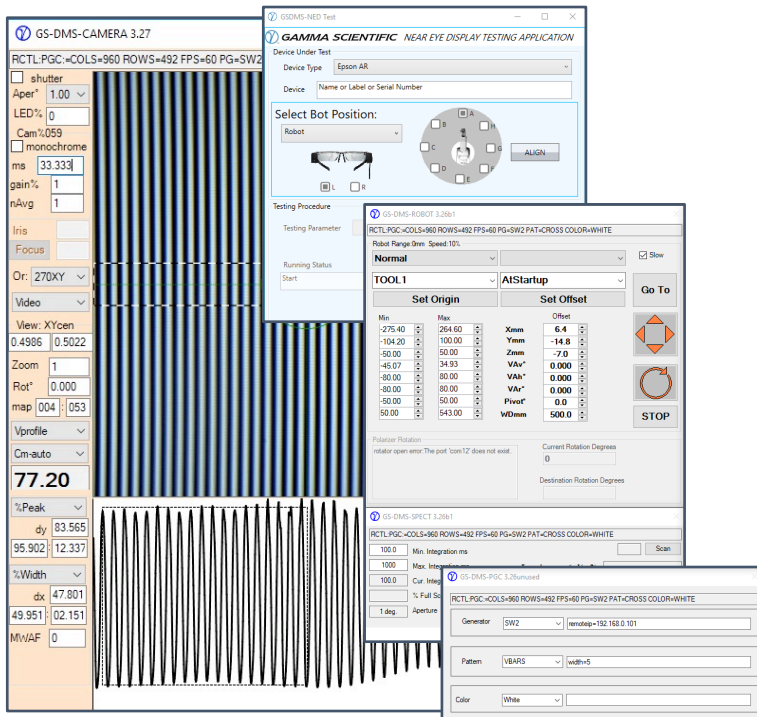


The various elements of the system are fully integrated and configured by Gamma Scientific to ensure out-of-the-box, plug and play operation.

## Critical Enabling Design Features

- Compact size to allow positioning of entrance pupil at the design eye point
- High sensitivity/high dynamic range spectrometer with outstanding signal to noise for small and large areas
- Exceptional color measurement spectral purity
- Ability to cover over 160 degree FOV with high resolution measurements in the virtual image space
- Precision mechanical positioning to the design eye point (manual positioning options available)





MTF and Position Screen Shots

The GsNEDTest™ software suite is fully integrated and supplies all the tools necessary to align, and characterize luminance, color, luminance & color uniformity, field of view, contrast and resolution contrast and Modulation Transfer Function (MTF), in a programmable and automated process.

This is accomplished using a modular software structure that allows the flexibility to combine video pattern generation, goniometric, focusing and spatial positioning (for the reference test system), automatic data collection and test pattern generation and selection.

Custom test suites can be scripted to run multiple types of tests rapidly and consecutively.

GsNEDTest™ SW Features		
Spectral Quality	Spatial Image Quality	Binocular Disparity
» Center Color and Luminance	» MTF Curves/Contrast Curve	» Interpupillary Distance (IPD) by Luminance
» Luminance Uniformity	» Michelson Contrast Uniformity	» Interpupillary Distance (IPD) by Contrast
» Color/Chromaticity Uniformity	» Image Geometric Distortion	» Left/Right Eye Parallax
» Color Gamut Area	» Virtual Image Distance	
» Field of View (by Luminance)	» Field of View (by Contrast)	
» Design Eyebox (by Luminance)	» Design Eyebox (by Contrast)	
» Sequential / Full-On-Full-Off Contrast	» Checkerboard Contrast	

All test methods conform with the latest international standards being developed by the IEC, IDMS and ISO for AR/VR Metrology where applicable; consult with Gamma Scientific for any additional tests.

*Leveraging more than 40 years of expertise in field-deployed HUD measurement systems for US military aircraft including the F-16, F-18, F-117, B1B, C-17 and F-35 Gamma Scientific has unmatched depth of expertise in virtual image display measurement.*